

39-HIWA-PG11

PG11

5-10

18.6

10

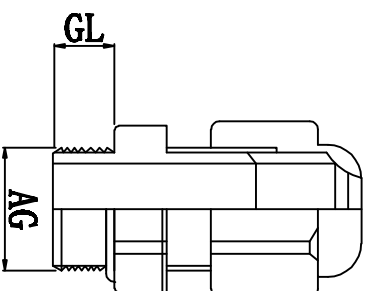
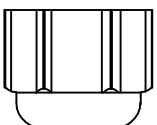
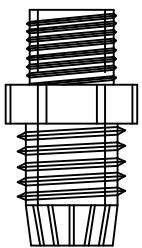
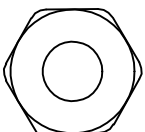
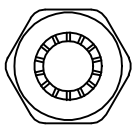
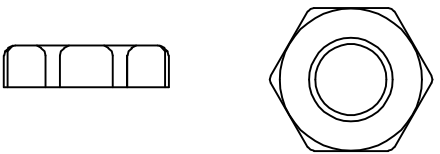
20

适用电缆
Cable Range (mm)

螺纹外径
Thread O. D AG (mm)

螺纹长度
Thread Length GL (mm)

扳手直径
Spanner Size (mm)



螺帽

本体 夹紧爪

迫紧头

材质：黄铜镀锌，UL认可的尼龙66，丁腈橡胶 (NBR) 耐候橡胶 (EPDM)
 特点：夹紧圈经特殊设计，拉力强，对电机不造成损伤
 用途：一般机械控制箱、配电盘、机器、电器等电缆固定用
 防护等级：IP68
 环境温度：静态：-40° C至+100° C, 短时至+120° C



DIMENSION		TOLERANCES							
0.0 0.00		±1.0							
FIRST ANGLE PROJ				A		NEW PART		sullivan	
				LTC.		REVISION RECORD		DWG. BY	
								CHK. BY	
								DATE	
								2012/08	
DWG. BY		liu liang		UNIT				mm	
CHK. BY		sullivan		REV.				A	
APP. BY		zhियan		DWG. NO.		HIWA/QR-JZ-		39-HIWA-PG11	