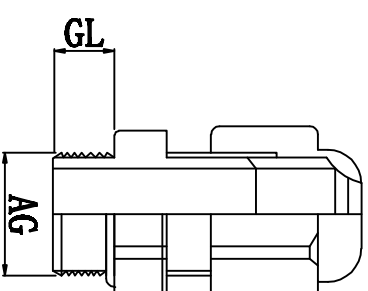
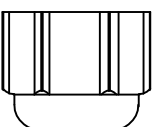
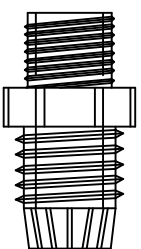
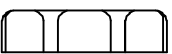
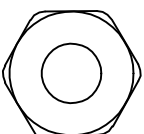
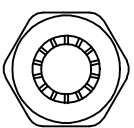
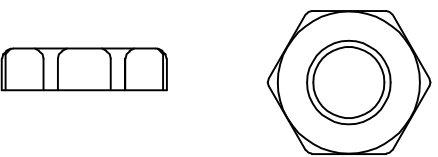


39-HIWA-PG13.5	PG13.5	6-12	20.4	10	22
	适用电缆 Cable Range (mm)	螺纹外径 Thread O. D AG(mm)	螺纹长度 Thread Length GL (mm)	扳手直径 Spanner Size (mm)	



螺帽

本体 夹紧爪

迫紧头

材质：黄铜镀锌，UL认可的尼龙66，丁腈橡胶 (NBR) 耐候橡胶 (EPDM)
 特点：夹紧圈经特殊设计，拉力强，对电机不造成损伤
 用途：一般机械控制箱、配电盘、机器、电器等电缆固定用
 防护等级：IP68
 环境温度：静态：-40° C至+100° C, 短时至+120° C



DIMENSION	TOLERANCES								
	0.0 0.00	±1.0							
FIRST ANGLE PROJ	A	NEW PART	sullivan	zy.wong	2012/08				
	LTR.	REVISION RECORD	DWG. BY	CHK. BY	DATE				
DWG. BY	liu liang	UNIT	mm						
CHK. BY	sullivan	REV.	A						
APP. BY	zhuyan	DWG. NO.	HIWA/QR-JZ-39-HIWA-PG13.5						