

39-HIWA-PG36

PG36

22-32

47

15

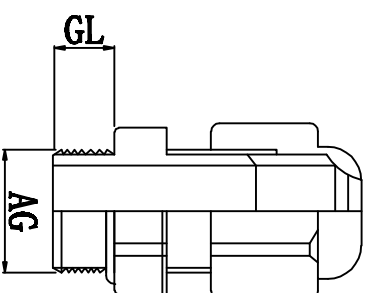
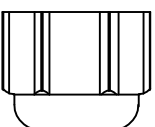
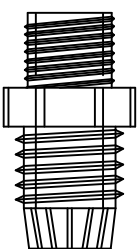
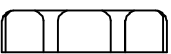
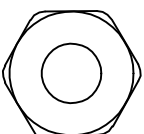
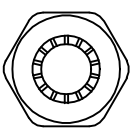
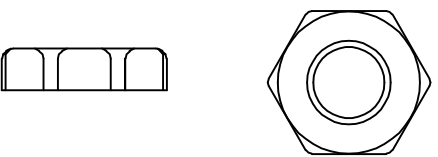
50

适用电缆
Cable Range (mm)

螺纹外径
Thread O. D AG (mm)

螺纹长度
Thread Length GL (mm)

扳手直径
Spanner Size (mm)



螺帽

本体 夹紧爪

迫紧头

材质：黄铜镀锌，UL认可的尼龙66，丁腈橡胶 (NBR) 耐候橡胶 (EPDM)
 特点：夹紧圈经特殊设计，拉力强，对电机不造成损伤
 用途：一般机械控制箱、配电盘、机器、电器等电缆固定用
 防护等级：IP68
 环境温度：静态：-40° C至+100° C, 短时至+120° C



DIMENSION	TOLERANCES				
0.0 0.00	±1.0				
FIRST ANGLE PROJ		A	NEW PART	sullivan	zy.wong 2012/08
		LTR.	REVISION RECORD	DWG. BY	CHK. BY
					DATE
DWG. BY	liu liang	UNIT	mm		
CHK. BY	sullivan	REV.	A		
APP. BY	zhuyan	DWG. NO.	HIWA/QR-JZ-39-HIWA-PG36		

HMWA 惠华 苏州惠华电子科技有限公司