

39-HIWA-PG48

PG48

29-35

59.3

15

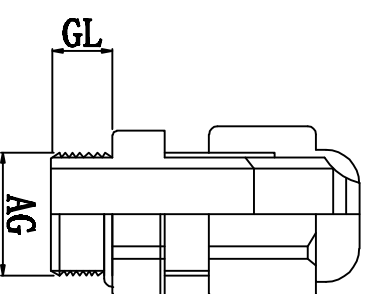
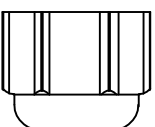
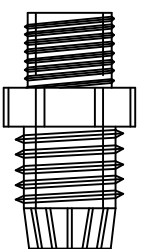
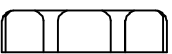
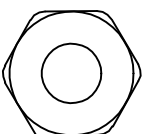
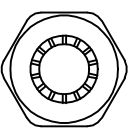
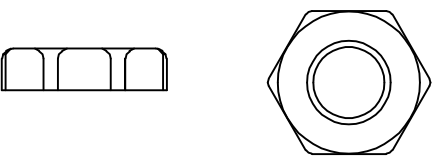
64

适用电缆
Cable Range (mm)

螺纹外径
Thread O. D AG(mm)

螺纹长度
Thread Length GL (mm)

扳手直径
Spanner Size (mm)



螺帽

本体 夹紧爪

迫紧头

材质：黄铜镀锌，UL认可的尼龙66，丁腈橡胶 (NBR) 耐候橡胶 (EPDM)
 特点：夹紧圈经特殊设计，拉力强，对电机不造成损伤
 用途：一般机械控制箱、配电盘、机器、电器等电缆固定用
 防护等级：IP68
 环境温度：静态：-40° C至+100° C, 短时至+120° C



| DIMENSION | TOLERANCES | | | | |
|------------------|------------|----------|-------------------------|----------|-----------------|
| 0.0 0.00 | ±1.0 | | | | |
| FIRST ANGLE PROJ | | A | NEW PART | sullivan | zy.wong 2012/08 |
| | | LTR. | REVISION RECORD | DWG. BY | CHK. BY |
| | | | | | DATE |
| DWG. BY | liu liang | UNIT | mm | | |
| CHK. BY | sullivan | REV. | A | | |
| APP. BY | zhuyan | DWG. NO. | HIWA/QR-JZ-39-HIWA-PG48 | | |