

39-HIWA-PG21

PG21

9-16

28.3

8

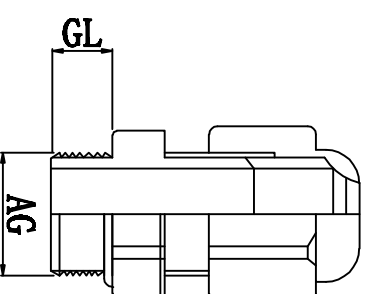
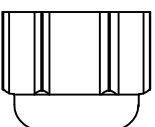
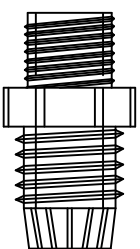
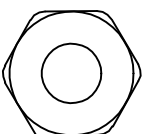
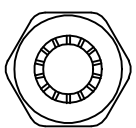
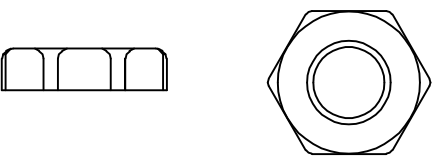
30

适用电缆
Cable Range (mm)

螺纹外径
Thread O. D AG (mm)

螺纹长度
Thread Length GL (mm)

扳手直径
Spanner Size (mm)



螺帽

本体 夹紧爪

迫紧头

材质：黄铜镀锌，UL认可的尼龙66，丁腈橡胶 (NBR) 耐候橡胶 (EPDM)
 特点：夹紧圈经特殊设计，拉力强，对电机不造成损伤
 用途：一般机械控制箱、配电盘、机器、电器等电缆固定用
 防护等级：IP68
 环境温度：静态：-40° C至+100° C, 短时至+120° C



DIMENSION		TOLERANCES							
0.0	±1.0								
0.00									
FIRST ANGLE PROJ		A	NEW PART	sullivan	zy.wong	2012/08			
		LTR.	REVISION RECORD	DWG. BY	CHK. BY	DATE			
DWG. BY	liu liang	UNIT	mm						
CHK. BY	sullivan	REV.	A						
APP. BY	zhuyan	DWG. NO.	HIWA/QR-JZ-39-HIWA-PG21						