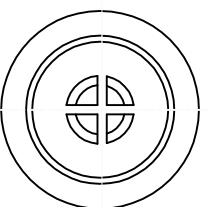
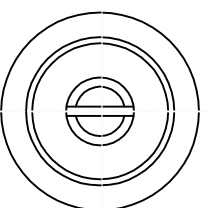
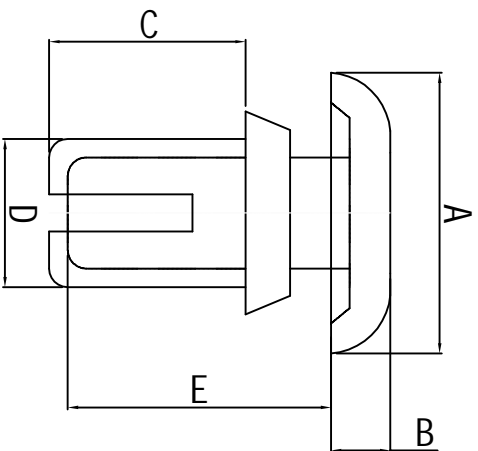


料号 Part NO.	品名 Parts Name	Hole Dia 孔径	Panel Thick 机板厚度	A	B	C	D	E	拉拔力
34-R2032	尼龙铆钉 R2032	2.1	1.3-2.0	4.2	1.2	3.2	2.0	3.8	3KG



- ◆ MATERIAL: NYLON 66 (UL)
  - ◆ FLAME CLASS: 94V-2
  - ◆ COLOR: NATURAL/BLACK
- 公差要求: 未标注公差±0.5



未经许可不得修改和复印  
该知识产权属于技术质量部;

DIMENSION	TOLERANCES	REVISION RECORD				DATE	DWG. BY	CHK. BY	UNIT
		A	NEW PART	DWG. BY	CHK. BY				
0.0	±0.5							mm	
0.00									
FIRST ANGLE PROJ		LTR.	REVISION RECORD	DWG. BY	CHK. BY	DATE	APP. BY	DWG. NO	
				sullivan	zy.wang	2011/28	wang zhiyan	HIMA/OR-JZ-34-R2032	

**HIMA** 苏州惠华电子科技有限公司