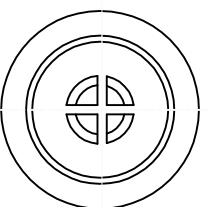
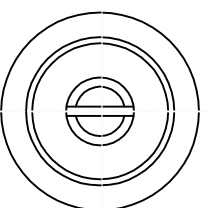
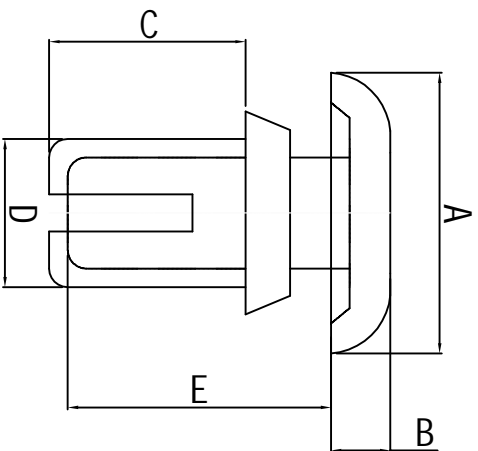


料号 Part NO.	品名 Parts Name	Hole Dia 孔径	Panel Thick 机板厚度	A	B	C	D	E	拉拔力
34-R2056	尼龙铆钉 R2056	2.1	3.7-4.4	4.2	1.2	5.6	2.0	7.2	3KG



- ◆ MATERIAL: NYLON 66 (UL)
  - ◆ FLAME CLASS: 94V-2
  - ◆ COLOR: NATURAL/BLACK
- 公差要求: 未标注公差±0.5



未经许可不得修改和复印  
该知识产权属于技术质量部;

DIMENSION	TOLERANCES	REVISION RECORD				DATE	DWG. BY	CHK. BY	UNIT
		A	NEW PART	REVISION RECORD	LTR.				
0.0	±0.5								
0.00									
FIRST ANGLE PROJ									
		APP. BY	wang zhiyan	DWG. NO.	HIMA/OR-JZ-34-R2056				
		CHK. BY	sullivan						
		DWG. BY	liu liang						
		DATE	2011/28						
		APP. BY	wang zhiyan	DWG. NO.	HIMA/OR-JZ-34-R2056				
		CHK. BY	sullivan						
		DWG. BY	liu liang						
		DATE	2011/28						

**HIMA** 苏州惠华电子科技有限公司