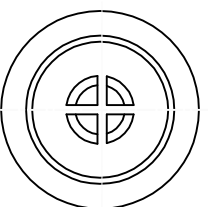
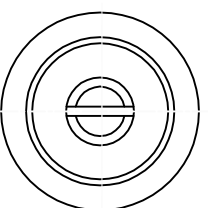
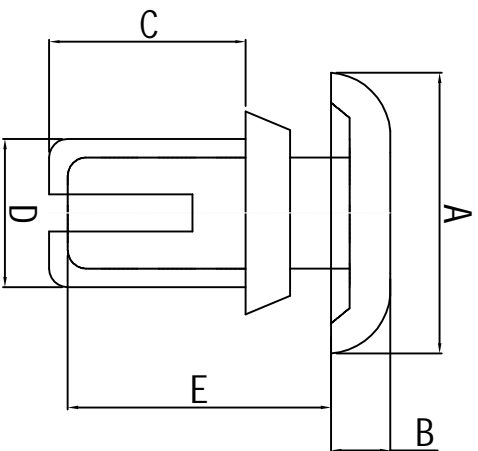


料号 Part NO.	品名 Parts Name	Hole Dia 孔径	Panel Thick 机板厚度	A	B	C	D	E	拉拔力
34-R3580	尼龙铆钉 R3580	3.6	5.7-6.6	6.4	1.6	8.0	3.5	9.1	12KG



- ◆ MATERIAL: NYLON 66 (UL)
 - ◆ FLAME CLASS: 94V-2
 - ◆ COLOR: NATURAL/BLACK
- 公差要求: 未标注公差±0.5



未经许可不得修改和复印
该知识产权属于技术质量部;

DIMENSION	TOLERANCES	DWG. BY				UNIT	
		CHK. BY	REV.	APP. BY	DWG. NO.	mm	
0.0 0.00	±0.5	Sullivan	A	wang zhiyan	HIMA/OR-JZ-34-R3580		
FIRST ANGLE PROJ		zy.wang					
		DATE	2011/28				
		REVISION RECORD					
		DWG. BY					
		CHK. BY					
		NEW PART					
		LTR.					

HIMA 苏州惠华电子科技有限公司