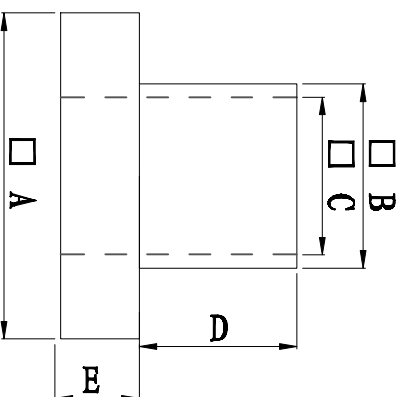
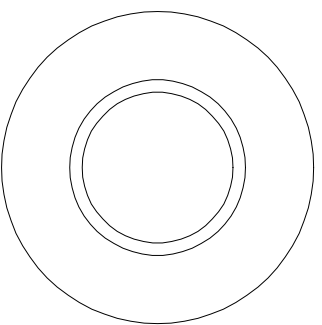


料号 Part NO.	品名 Parts Name	型号 Part NO.	尺寸Dimension					备注
			A (mm)	B (mm)	C (mm)	D (mm)	E (mm)	
69-TW-9	电晶体垫片	TW-9	10.0	6.0	5.0	5.0	1.0	



- ◆ MATERIAL: PA66 V2/PBT/
PA46/PPS/PA66 V0
 - ◆ COLOR: NATURAL
 - ◆ UNIT: mm
- 用途: 锁于电晶体上,
避免晶体外壳与散热片间造成短路。



未经许可不得修改和复印
该知识产权属于技术质量部

DIMENSION	TOLERANCES	FIRST ANGLE PROJ			
		A	NEW PART	DWG. BY	DATE
0.0	± 0.3				
0.00					
		LTR.	REVISION RECORD	CHK. BY	DATE

DWG. BY	UNIT	DWG. NO.
<i>Lin Liang</i>	mm	HIMA/OR-JZ-69-TW-9
CHK. BY	REV.	DWG. NO.
<i>cailiu</i>	A	
APP. BY		
<i>wang shiyuan</i>		