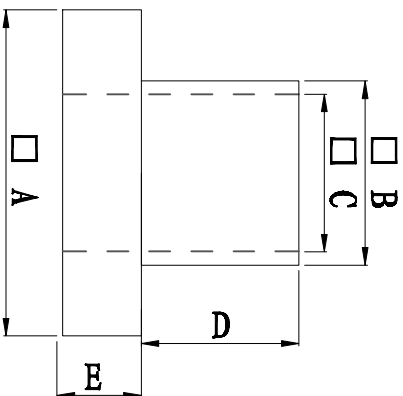
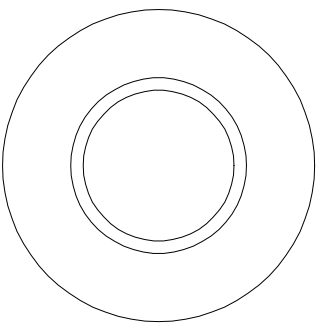


料号 Part NO.	品名 Parts Name	型号 Part NO.	尺寸Dimension					备注
			A (mm)	B (mm)	C (mm)	D (mm)	E (mm)	
69-TW-64	电晶体垫片	TW-64	4.0	2.7	2.1	0.8	0.8	



◆ MATERIAL: PA66 V2/PBT/

PA46/PPS/PA66 V0

◆ COLOR: NATURAL

◆ UNIT: mm

用途: 锁于电晶体上,  
避免晶体外壳与散热片间造成短路。



未经许可不得修改和复印  
该知识产权属于技术质量部

DIMENSION	TOLERANCES	FIRST ANGLE PROJ				
		A	NEW PART	DWG. BY	CHK. BY	DATE
0.0	± 0.3	LTR.	REVISION RECORD			
0.00						
DWG. BY	CHK. BY	APP. BY	DWG. NO.	UNIT	mm	
<i>liu liang</i>	<i>cailiang</i>	<i>wang shiyuan</i>		REV.	A	
				DWG. NO.	HIMA/OR-JZ-69-TW-64	