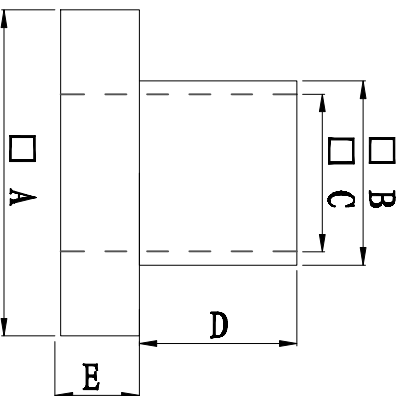
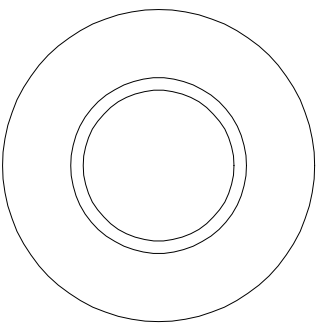


料号 Part NO.	品名 Parts Name	型号 Part NO.	尺寸Dimension					备注
			A (mm)	B (mm)	C (mm)	D (mm)	E (mm)	
69-TW-65	电晶体垫片	TW-65	6.0	3.55	3.0	4.6	2.0	



- ◆ MATERIAL: PA66 V2/PBT/
PA46/PPS/PA66 V0
 - ◆ COLOR: NATURAL
 - ◆ UNIT: mm
- 用途: 锁于电晶体上,
避免晶体外壳与散热片间造成短路。



未经许可不得修改和复印
该知识产权属于技术质量部

DIMENSION		TOLERANCES		FIRST ANGLE PROJ					
0.0	±0.3	A	NEW PART	DWG. BY	CHK. BY	DATE	DWG. BY	UNIT	mm
0.00		LTR.	REVISION RECORD					CHK. BY	
								APP. BY	DWG. NO.
									HIMA/OR-JZ-69-TW-65

DWG. BY	<i>Lin Liang</i>	UNIT	mm
CHK. BY	<i>cailiuau</i>	REV.	A
APP. BY	<i>wang shiyuan</i>	DWG. NO.	HIMA/OR-JZ-69-TW-65

HIMA 惠华苏州惠华电子科技有限公司