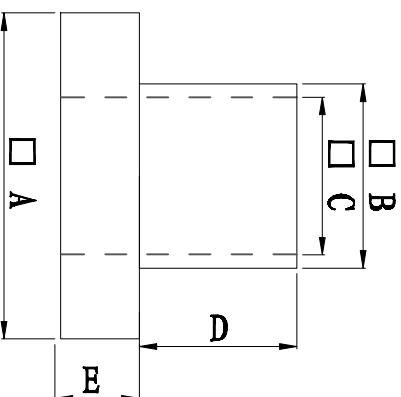
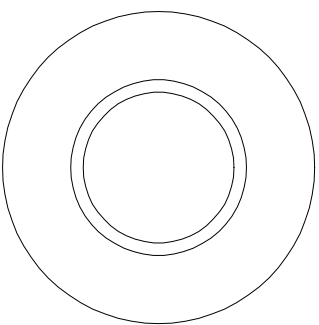


料号 Part NO.	品名 Parts Name	型号 Part NO.	尺寸Dimension					备注
			A (mm)	B (mm)	C (mm)	D (mm)	E (mm)	
69-TW-100	电晶体垫片	TW-100	6.1	3.5	3.0	2.1	1.4	



- ◆ MATERIAL: PA66 V2/PBT/
PA46/PPS/PA66 V0
 - ◆ COLOR: NATURAL
 - ◆ UNIT: mm
- 用途: 锁于电晶体上,
避免晶体外壳与散热片间造成短路。



未经许可不得修改和复印
该知识产权属于技术质量部

DIMENSION	TOLERANCES	FIRST ANGLE PROJ			
		A	NEW PART	DWG. BY	CHK. BY
0.0 0.00	± 0.3	LTR.	REVISION RECORD	DATE	
DWG. BY	UNIT	CHK. BY	REV.	DWG. NO.	
CHK. BY					
APP. BY					

DWG. BY *Lin liang* UNIT mm

CHK. BY *cailiang* REV. A

APP. BY *wang shiyuan* DWG. NO. HIWA/OR-JZ-69-TW-100

HIMA 惠华苏州惠华电子科技有限公司