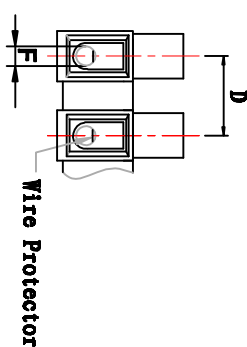
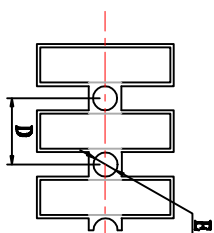
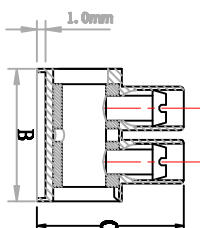
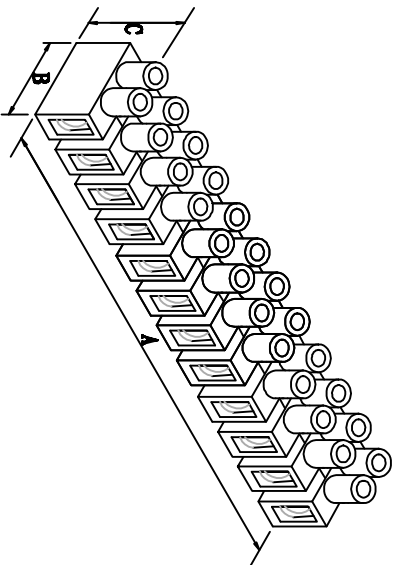


料号 Part NO.	品名 Parts Name	型号 Part NO.	适用电线/wire Range		Screw 螺丝	尺寸 Dimensions (mm/in.)						Packing 包装	相关认证
			Cross-Sec.	AWG, Cu		A	B	C	D	E	F		
41-08HDSH	端子台(H型)	PA8HDS	1.5mm ²	#22-#12 Sol #14-#12 Str	M2.6 x 5	96.20	17.00	14.50	8.20	2.90	2.8 ± 0.1	50pcs/bag 500pcs/Ctn	VDE/FI/CQC/UL/CSA



扭力对照表

规格	扭力 In	扭力 kgf-cm	扭力 Lbf-in	扭力 kgf-cm	扭力 In-lb
PA001 0.4	4.1	2.9	2.3	2.26	
PA009 0.5	6.1	4.4	6.1	3.0	
PA8 0.4	4.1	3.8	4.1	2.26	
PA10 0.5	6.1	4.4	6.1	3.0	
PA11 0.5	6.1	4.8	6.1	3.0	
PA12 0.8	8.1	7.0	8.1	5.0	
PA14 1.2	12.9	12.0	13.69	8.0	
PA16 1.2	12.9	10.0	11.92	8.0	
PA18 2.0	20.4	18.0	20.15	15	

※扭力单位: 1kgf-cm=0.86796 In-lb
※1/in-lb=1.1521kg-cm
※1牛=10.2kg-cm

介绍:
 底座: 底座加高1.0mm.
 材质: 高级尼龙66工程塑胶,
 防火等级UL 94V-2阻燃等级.
 温度: 105℃ (UL), -30℃to110℃ (IEC).
 线座: 铜合金, 镀锌.
 压片: 不锈钢材质, PA8HDS附加弹片.
 螺丝: 铁线, 镀锌.
 剥线长度: PA8HDS约5.0mm/0.20in.
 接线排数: 12排. (可裁切)
 公差: 未标注为 ±1mm

技术参数:
 VDE/FI/CQC: 450V, 17.5A, 1.5mm²
 UL/CSA: 300V, 20A, #22-#12



DIMENSION	TOLERANCES	Revision						DWG. BY	CHK. BY	APP. BY	DWG. NO.
		A	NEW PART	REVISION RECORD	DWG. BY	CHEK. BY	DATE				
0.0 0.00	±1.0										
PRIST ANGLE PROJ		A									
		LTR.									

未经许受权不得修改和复印
 该知识产权属于技术质量部

DWG. BY *Lin Liang* UNIT mm
 CHK. BY *William* REV. A
 APP. BY *wang shiyuan* DWG. NO. HIMA/QR-JZ-41-08HDSH
HIMA 惠华电子科技有限公